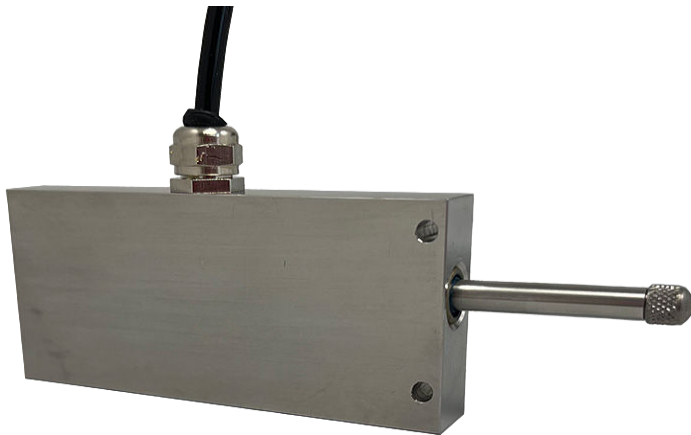


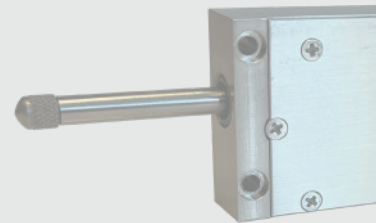
FIBER OPTIC DISPLACEMENT SENSOR

KEY FEATURES

MULTI-PURPOSE FIBER OPTIC DISPLACEMENT



- 10 mm & 25 mm linear stroke length standard
- Outstanding resolution
- Robust construction and water splash proof housing
- Convenient wall mount attachment
- Intrinsically safe
- EMI/RFI and microwave immune
- OEM-type and custom version



ODP-B Compatible with Opsens Solutions' WLPI signal conditioners

DESCRIPTION

Opsens Solutions' ODP-B fiber optic displacement sensor is designed to offer high precision in the **most demanding environments**. Combined with Opsens Solutions' WLPI signal conditioning technology (# 7,259,862) and with the inherent advantages of fiber optics, the ODP-B delivers **unprecedented repeatability, resolution and reliability** in the most adverse conditions such as high level of EM, RF, MR and microwave field environments.

The standard model comes with 10 mm or 25 mm linear stroke length and with one micron resolution. **The new generation of displacement sensor (ODP-B sensor) is fully made of stainless-steel material and dielectric material to remove any corrosion and galvanic corrosion risk.** Specialty design for ruggedized industrial application.

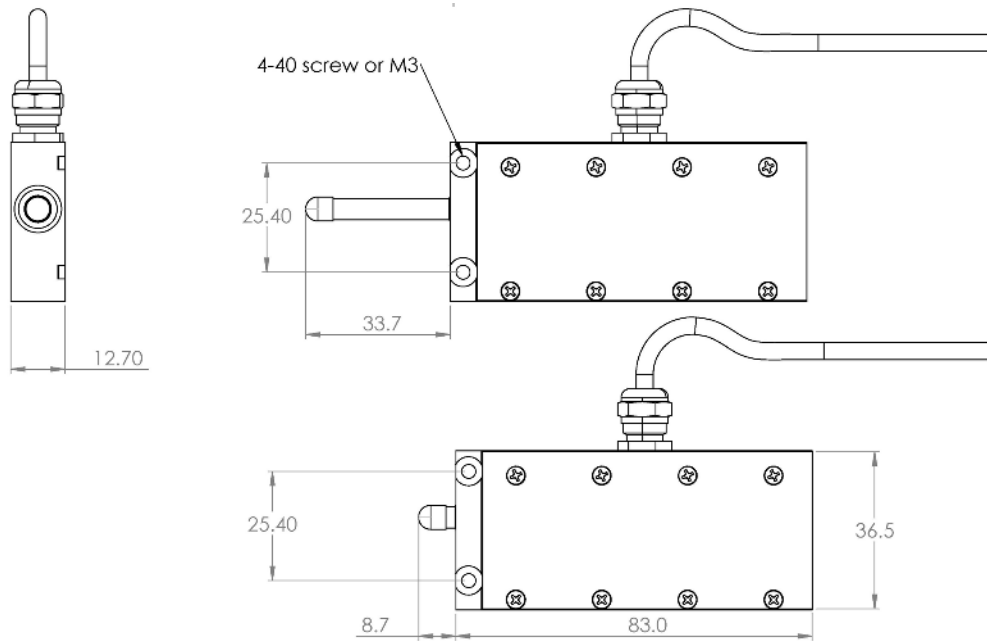
The ODP-B is compatible with all Opsens Solutions' WLPI signal conditioners. This precise and robust sensor, available with different optical cables length is customizable according to customer specific applications or for OEM-type applications.

APPLICATIONS

- Civil engineering and geotechnical applications
- EM, RF and microwave environments
- Automotive, robotic systems
- High voltage environments
- Aeronautic & aerospace applications
- Material science
- Nuclear and hazardous environments
- RF and microwave drying applications

ODP-B

FIBER OPTIC DISPLACEMENT SENSOR



All units are in millimeters

SPECIFICATIONS

LINEAR STROKE LENGTH	10 mm & 25 mm standard (other stroke lengths available upon request)
RESOLUTION	1 micron (based on 20 data samples averaging)
ACCURACY	0.2% F.S. (@ 25 °C)
REPEATABILITY	0.05% F.S
TEMPERATURES OPERATING RANGE	-40 to 85 °C (higher or lower temperature range available upon request)
OPERATING HUMIDITY RANGE	0-100 %
EMI/RFI SUSCEPTIBILITY	Complete immunity
CONSTRUCTION MATERIAL	Full Stainless Steel 316 body
WEIGHT	300g. (excluding cable)
LOAD MECHANISM	Spring return for fully extended shaft at rest (spring load can be removed)
CABLE LENGTH	Up to 3 km (Sampling rate dependent, consult factory for more details)
OPTICAL CONNECTOR	LCA (Standard), SCA (Standard), other connector available on request
SIGNAL CONDITIONER COMPATIBILITY	All Opsens Solutions WLPI signal conditioners